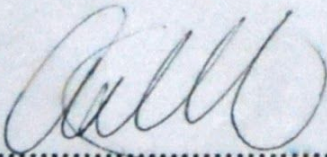


TEST	RESULTS	TEST METHOD
Assay - caproic*	nd	Ph. Eur. 2.2.28**
Assay - myristic*	0.01	Ph. Eur. 2.2.28**
Assay - palmitic*	14.43	Ph. Eur. 2.2.28**
Assay - palmitoleic*	0.20	Ph. Eur. 2.2.28**
Assay - stearic*	13.94	Ph. Eur. 2.2.28**
Assay - oleic*	42.52	Ph. Eur. 2.2.28**
Assay - cis-vaccenic*	1.31	Ph. Eur. 2.2.28**
Assay - linoleic*	25.82	Ph. Eur. 2.2.28**
Assay - linolenic*	0.19	Ph. Eur. 2.2.28**
Assay - arachidic*	0.77	Ph. Eur. 2.2.28**
Assay - cis-11-eicosenoic*	0.21	Ph. Eur. 2.2.28**
Assay - heneicosenoic*	0.04	Ph. Eur. 2.2.28**
Assay - arachidonic*	0.22	Ph. Eur. 2.2.28**
Assay - erucic*	nd	Ph. Eur. 2.2.28**
Assay - lignoceric*	0.07	Ph. Eur. 2.2.28**

* Assay by GC (FID detection - percent report)

** Modified to BPX5 column

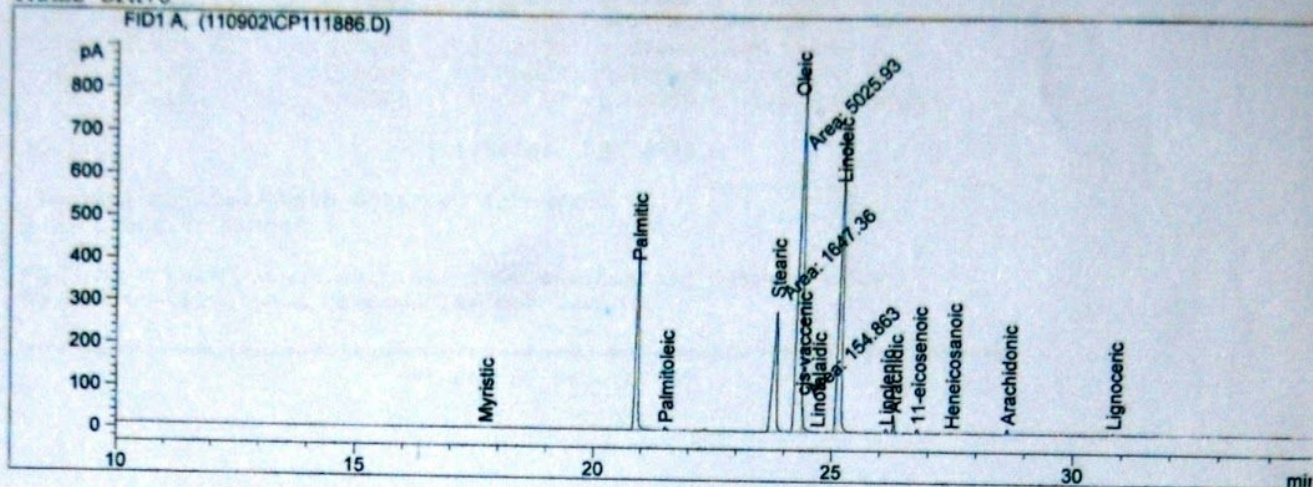
nd - denotes none detected



.....
ASHLEY DOWELL
MANAGER-ANALYTICAL SERVICES

Injection Date : 2/09/2011 11:37:19 AM Seq. Line : 1
 Sample Name : tamanu oil Location : Vial 101
 Acq. Operator : alice Inj : 1
 Inj Volume : 1 µl
 Acq. Method : E:\DATA-GC2\GC2MET-1\QAMETH-1\FAMES35.M
 Last changed : 2/09/2011 10:39:35 AM by alice
 Analysis Method : E:\DATA-GC2\GC2MET-1\QAMETH-1\FAMES35.M
 Last changed : 2/09/2011 3:04:40 PM by ajd
 (modified after loading)

FAMES BPX70



Area Percent Report

Sorted By : Signal
 Calib. Data Modified : 2/09/2011 3:05:05 PM
 Multiplier : 1.0000
 Dilution : 1.0000
 Use Multiplier & Dilution Factor with ISTDs

Signal 1: FID1 A,

Peak #	RetTime [min]	Type	Width [min]	Area [pA*s]	Area %	Name
1	3.461		0.0000	0.00000	0.00000	Butyric
2	4.385		0.0000	0.00000	0.00000	Caproic
3	6.653		0.0000	0.00000	0.00000	caprylic
4	10.302		0.0000	0.00000	0.00000	Capric
5	12.340		0.0000	0.00000	0.00000	Undecanoic
6	14.222		0.0000	0.00000	0.00000	Lauric
7	16.115		0.0000	0.00000	0.00000	Tridecanoic
8	17.745	PB	0.0622	2.31277	0.01956	Myristic
9	18.700		0.0000	0.00000	0.00000	Myristoleic
10	19.450		0.0000	0.00000	0.00000	Pentadecanoic
11	20.278		0.0000	0.00000	0.00000	Pentadecenoic
12	20.911	PB	0.0711	1705.75037	14.42936	Palmitic
13	21.520	BBA	0.0584	24.12597	0.20409	Palmitoleic
14	22.357		0.0000	0.00000	0.00000	Magaric
15	22.913		0.0000	0.00000	0.00000	Heptadecenoic
16	23.835	MM	0.0902	1647.36243	13.93545	Stearic
17	24.130		0.0000	0.00000	0.00000	Elaidic
18	24.267	MF	0.0967	5025.92822	42.51557	Oleic
19	24.381	FM	0.0343	154.86263	1.31002	cis-vaccenic
20	24.713	VB B	0.0622	2.89059	0.02445	Linolelaidic
21	25.165	BV	0.0817	3052.03979	25.81796	Linoleic
22	25.760		0.0000	0.00000	0.00000	g-Linolenic
23	26.138	PB	0.0518	22.69711	0.19200	Linolenic
24	26.292	BBA	0.0453	91.53703	0.77433	Arachidic
25	26.782	BP	0.0514	25.06658	0.21204	11-eicosenoic
26	27.493	PB	0.1321	5.12424	0.04335	Heneicosanoic

Peak #	RetTime [min]	Type	Width [min]	Area [pA*s]	Area %	Name
27	27.750		0.0000	0.00000	0.00000	Eicosadienoic
28	28.236		0.0000	0.00000	0.00000	8,11,14-Eicosatrienoic
29	28.564		0.0000	0.00000	0.00000	11,14,17-Eicosatrienoic
30	28.647	PB	0.0484	26.54879	0.22458	Arachidonic
31	28.664		0.0000	0.00000	0.00000	Behenic
32	29.280		0.0000	0.00000	0.00000	Erucic
33	29.585		0.0000	0.00000	0.00000	Eicosapentaenoic
34	29.880		0.0000	0.00000	0.00000	Tricosanoic
35	30.025		0.0000	0.00000	0.00000	Docosadienoic
36	30.831	PB	0.0486	8.04732	0.06807	Lignoceric
37	31.420		0.0000	0.00000	0.00000	Nervonic
38	32.212		0.0000	0.00000	0.00000	Docosahexaemoic

Totals : 1.17943e4 99.7708

Results obtained with enhanced integrator!

2 Warnings or Errors :

Warning : Calibration warnings (see calibration table listing)

Warning : Calibrated compound(s) not found

=====
*** End of Report ***